



NEWINGTON
LONDON

1 Bedrooms

Apartment

Located in London

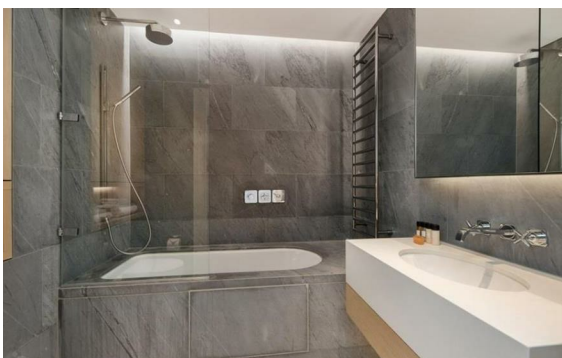
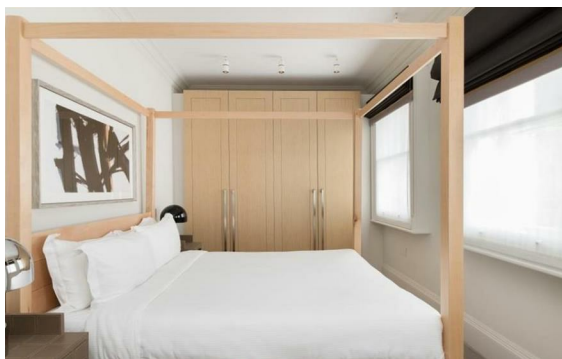
£1,135 Per Month



info@newingtonstates.com

<http://www.newingtonstates.com>

020 7724 2233



A well-presented second-floor apartment with lift access, superbly situated on Baker Street in a prime central London location. The accommodation comprises a bright open-plan reception/dining space, a generous double bedroom with good storage, and a contemporary bathroom finished to a high specification. The property further benefits from underfloor heating and air conditioning.

Ideally located within easy reach of Marylebone Village and Regent's Park, the apartment is also moments from excellent transport connections, including Baker Street Underground and Marylebone Station, as well as a variety of local shops, cafés and restaurants.

EPC rating: C

Energy Efficiency Rating: C

Agents Note: Whilst every care has been taken to prepare these particulars, they are for guidance purposes only. All measurements are approximate and are for general guidance purposes only and whilst every care has been taken to ensure their accuracy, they should not be relied upon and potential buyers/tenants are advised to recheck the measurements.

NEWINGTON LONDON

60 Upper Montagu Street

London

W1H 1SN

020 7724 2233

info@newingtonstates.com

<http://www.newingtonstates.com>